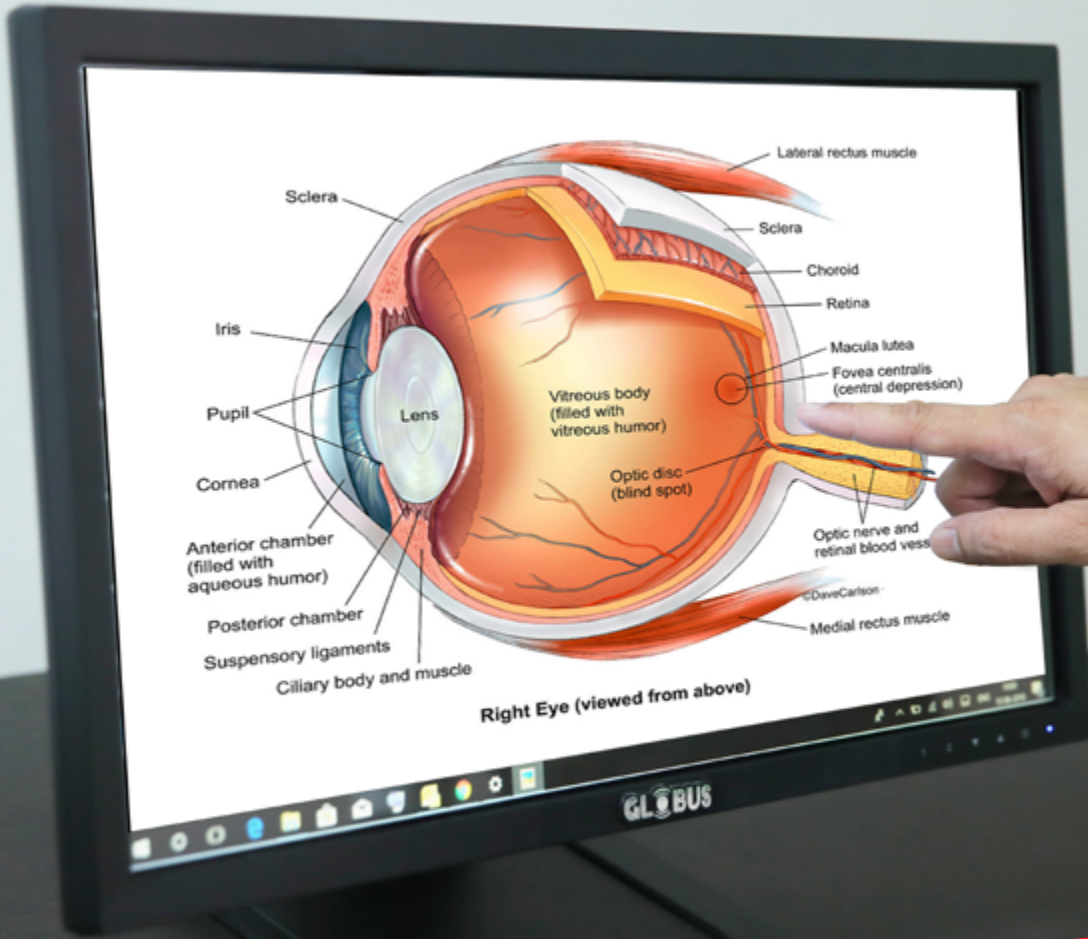




Available on  
**GeM**  
Government  
e Marketplace



**Interactive Panel - Enterprise Series**

Works in conjunction with Interactive Board, Pad and Visualizer

MODEL: GP 22KLP

# GP 22KLP

# Application Areas

Schools - Colleges - Universities

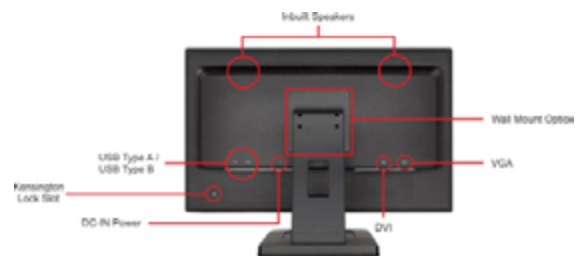
Corporate Offices - Meeting Rooms - Training Rooms

Huddle Rooms - Conference Rooms

## Interactive Panel

### Technical Specifications

Model	GP 22KLP
Screen Size	21.5
Panel	Active Matrix Color TFT
Panel Surface	Hard Coating (8H), Finger Touch
Tilt	20° ~ 5°
Backlight	White-Light LED
Backlight Life	50,000 Hrs. Min.
Native Resolution	1920 x 1080
Response Time	5 ms
Viewing Angle	H:170°, V: 160°
Luminance of White	450 cd/m <sup>2</sup>
Contrast Ratio	3000:1
Horizontal & Vertical Frequency	H: 24~83 kHz, V:50~76 Hz
Video Signal Input	RGB (Analog), DVI-D (Digital)
Connectors	D-Sub x 1, DVI x 1, USB x 2 (Type A/ Type B)
Audio	3.5mm Jack
Speaker	2W x 2
Power Supply Type	External adapter, 3 Pin Plug
Power Supply	AC 100-240V, 50 / 60Hz
Power Consumption	36 watts, saving mode: <18watt
Operating Temperature	0-40° C, 20%-90% RH
Weight	4.9 kgs Net
Wall Mount	100 mm x 100 mm
Dimensions	511 x 365 x 240 mm (including stand)
Accessories	Power Cable, AC/DC Adaptor, VGA Cable, Audio Cable, DVI Cable, USB Cable



\*Due to continuous product development, the specifications may change without prior notice.

\*\*Product image(s) are for illustrative purposes only and may differ from the actual product.



Corporate Office:

A-66, Sector-4, Noida, District Gautam Buddha Nagar, U.P., India - 201301

☎ 0120-4051700/800 ✉ 0120-4051827 📧 info@globusinfocom.com

📞 For Sales: 0 85888 39434 🌐 www.globusinfocom.com